

SpaceClaim plugin for Rhino

Overview

SpaceClaim has created a plugin for Rhino that Exports all geometry, or selected geometry, from Rhino to SpaceClaim. It also Imports the current SpaceClaim window contents back into Rhino.

Version support

Rhinoceros versions supported: 4.0 and 5.0

Functionality

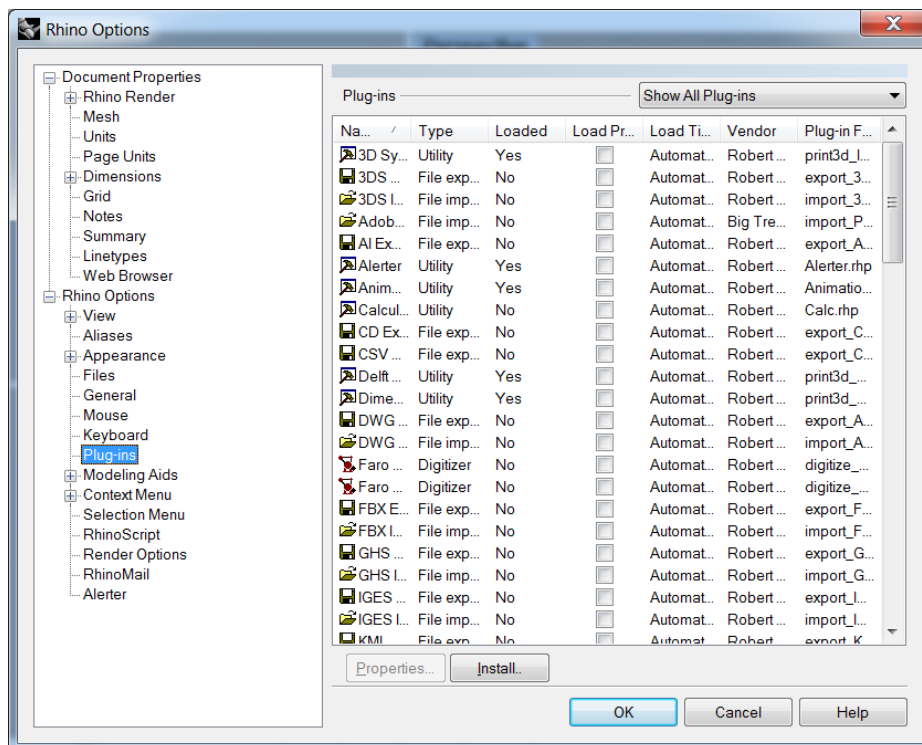
In Rhino, with *nothing* selected, click the **LMB** to launch SpaceClaim (if it is not already open) and **Export** the entire window to SpaceClaim.

In Rhino, with geometry selected, click the **LMB** to launch SpaceClaim (if it is not already open) and **Export** only what is selected to SpaceClaim.

To **Import** geometry back into Rhino, click the **RMB** (in Rhino) and the model import into the Rhino window in the exact place as the original. There will be two sets of surfaces (old and new) in the same place allowing for comparison and manual replacement.

Install procedure

Rhinoceros version 4.0

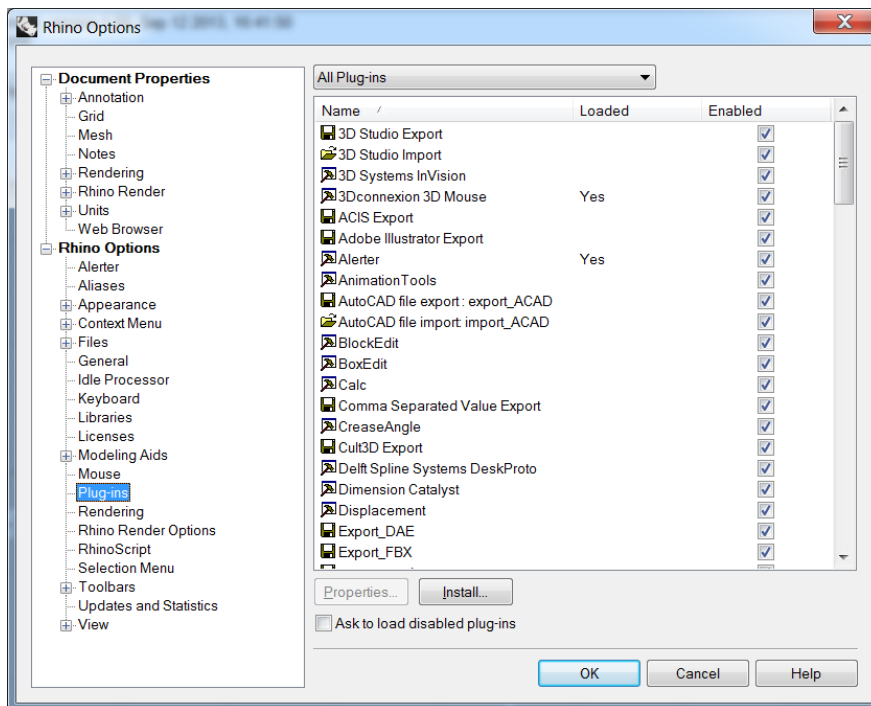


• In Rhinoceros Version 4.0, go to Tools ->

Options -> Plug-Ins and select the **Install** button

- In the Load Plug-In dialog, Browse to the SpaceClaim installation folder (Current default is C:\Program Files\SpaceClaim)
- Select “**RhinoSpaceClaimPlugIn.4.0.dll**” from the SpaceClaim installation folder
- Click the **Open** button to get it to populate into the Plug-in list.

Rhinoceros version 5.0



- In Rhinoceros Version 5.0, go to Tools -> Options -> Plug-Ins and select the **Install** button
- In the Load Plug-In dialog, Browse to the SpaceClaim installation folder (Current default is C:\Program Files\SpaceClaim)
- Select “**RhinoSpaceClaimPlugIn.5.0.dll**” from the SpaceClaim installation folder
- Click the **Open** button to get it to populate into the Plug-in list.

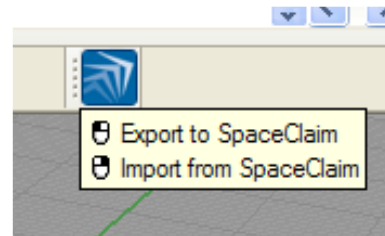
Loading the Plugin

Find the Rhino SpaceClaim Plug-In item in the list of plug-ins **“Rhino SpaceClaim PlugIn”**

- Right Mouse Button on the Plug-In and Select **Load Plug-In**
- **OK** to finish

This should load a button in Rhino toolbar with SpaceClaim logo. Anytime the SpaceClaim button is pressed in the future it will load the plug-in if it is not loaded already.

For more instructions on Plug-Ins, please refer to “Help->Plug-Ins” menu in Rhino.



Testing the Plugin

Follow the steps below to ensure the Plug-in is functioning correctly.

- Start Rhino and create a simple box
- Left-click on the SpaceClaim icon (to Export to SpaceClaim)

If SpaceClaim starts automatically and displays the box you created in Rhino, the Plug-in is configured and working correctly.