

Ansys SCADE LifeCycle®

SCADE LifeCycle is part of the Ansys Embedded Software family of products and solutions that includes modules providing unique support for application lifecycle management.

This product line features requirements traceability via Application Lifecycle Management (ALM) tools, traceability from models, configuration and change management, and automatic documentation generation.

SCADE LifeCycle enhances the functionalities of Ansys SCADE® tools with add-on modules that bridge SCADE solutions and Requirement Management tools or PLM/ALM (Product Lifecycle Management/ Application Lifecycle Management) tools. With SCADE LifeCycle, all systems and software teams involved in critical applications development can manage and control their design and verification activities across the full life cycle of their SCADE applications.

/ Requirements Traceability

SCADE LifeCycle Application Lifecycle Management (ALM) Gateway provides an integrated traceability analysis solution for safety-critical design processes with SCADE Architect, SCADE Suite, SCADE Display, SCADE Solutions for ARINC 661 and SCADE Test:

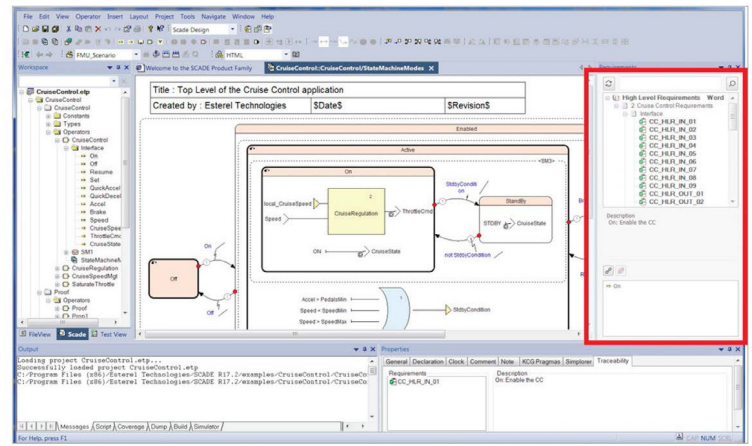
- Connection to ALM tools: linkage to DOORS NG, DOORS (9.6 and up) Jama Connect, Siemens Polarion, Dassault Systèmes Reqtify 2016.
- Graphical creation of traceability links between requirements or other structured documents and SCADE models.
- Traceability of test cases from SCADE Test Environment projects.
- Bidirectional navigation across requirements and tests.
- Customizable Export of SCADE artifacts to DOORS or Jama Connect.
- Compliant with DO-178B, DO-178C, EN 50128, IEC 61508, ISO 26262, and IEC 60880 standards.



Project Documentation Generation

SCADE LifeCycle Reporter automates the time-consuming creation of detailed and complete reports from SCADE Suite, SCADE Display, SCADE Architect and SCADE UA Page Creator for ARINC 661 designs through:

- Generation of reports in RTF or HTML formats.
- Customization of report content and display.
- Customization of generic report templates based on TCL scripting language.
- Setting common documentation standards.
- Integrating with SCADE LifeCycle ALM Gateway for reporting traceability information at model level.
- Incremental review activities producing a Model change report for SCADE Suite through:
 - Generation of HTML report listing all changes between two SCADE models.
 - Enabling to report only modified elements.

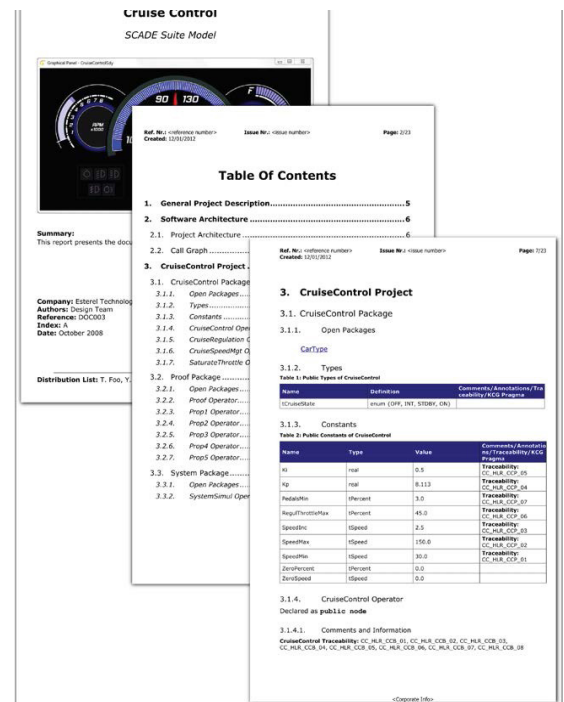


The SCADE LifeCycle Reporter is qualified off-the-shelf for DO-178C/ DO-330 at TQL-5, ISO 26262 TCL3, EN 50128 T2, IEC 61508 T2 (for SCADE Suite and SCADE Display including ARINC 661 pages). SCADE LifeCycle Reporter certification data includes Tool Operational Requirements (TOR), Tool Configuration Index (TCI), and Release Note (RN).

Configuration and Change Control

SCADE LifeCycle Configuration Management Gateway allows integration of SCADE Suite and SCADE Display models in a configuration management environment such as IBM Rational Synergy, IBM Rational ClearCase®, Serena Dimensions CM and PVCS®, CVS, or Microsoft Visual Source Safe™. Features include:

- Support of SCCI (Source Code Control Integration) standard.
- Data stored in ASCII format.
- Common management commands, such as check in/check out, directly accessible from SCADE Suite and SCADE Display Editors.



ANSYS, Inc.
www.ansys.com
ansysinfo@ansys.com
866.267.9724

© 2020 ANSYS, Inc. All Rights Reserved.