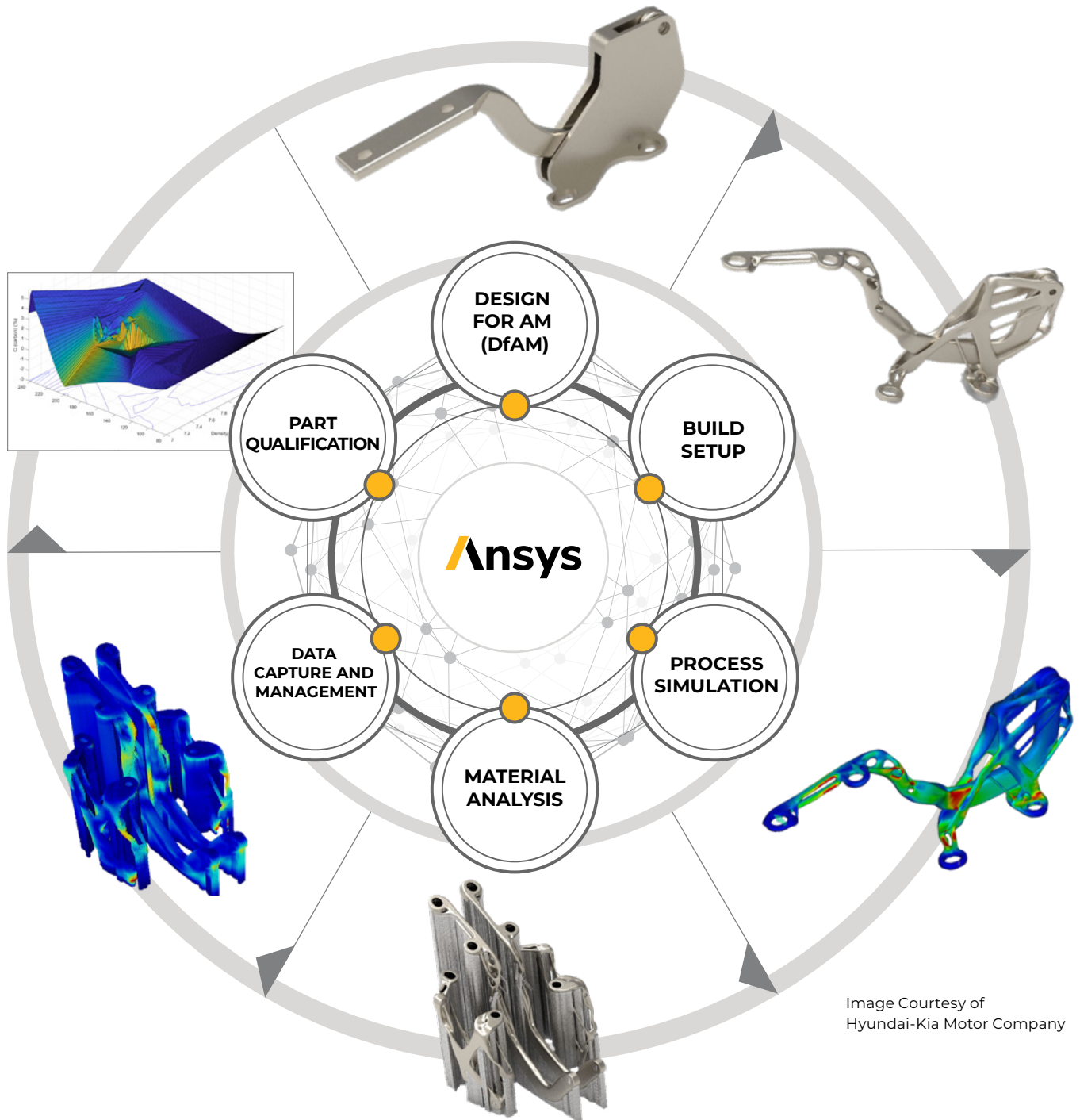


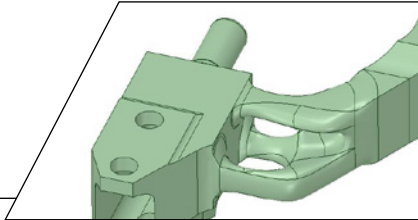
A COMPLETE ADDITIVE MANUFACTURING SOLUTION

A comprehensive and scalable software solution which minimizes the risk of your additive manufacturing processes and ensures high quality, certifiable parts.



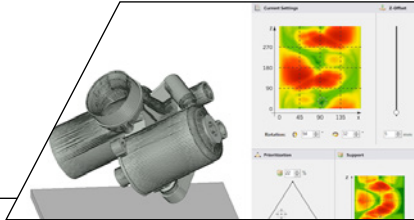
/ Design for AM (DfAM)

- CAD Modeling
- Topology Optimization
- Lattice and Light weighting



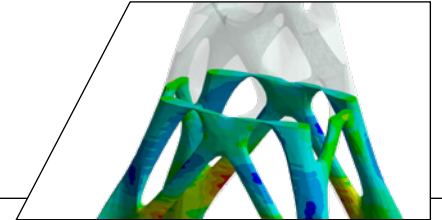
/ Build Setup

- STL File Repair and Geometry Manipulation
- Part Nesting and Support Generation
- Orientation Guidance and Wizards



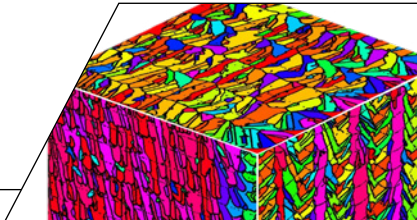
/ Process Simulation

- Metal AM Process Simulations
- Distortion Compensation
- Build Failure Prediction



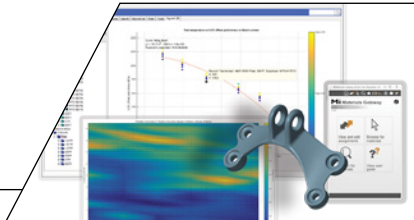
/ Material Analysis

- Curated Material Property Databases
- Grain Morphology Predictions
- Melt pool and Porosity Prediction



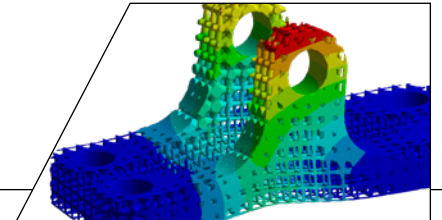
/ Data Acquisition and Management

- Traceability and full control of AM Data
- Consolidate, control and share AM data across organization



/ Part Qualification

- Design Validation
- Structural and Thermal Analysis
- Document control and Certification



ANSYS, Inc.
Southpointe
2600 Ansys Drive
Canonsburg, PA 15317
U.S.A.
724.746.3304
ansysinfo@ansys.com

If you've ever seen a rocket launch, flown on an airplane, driven a car, used a computer, touched a mobile device, crossed a bridge or put on wearable technology, chances are you've used a product where Ansys software played a critical role in its creation. Ansys is the global leader in engineering simulation. We help the world's most innovative companies deliver radically better products to their customers. By offering the best and broadest portfolio of engineering simulation software, we help them solve the most complex design challenges and engineer products limited only by imagination.

Visit www.ansys.com for more information.

Any and all ANSYS, Inc. brand, product, service and feature names, logos and slogans are registered trademarks or trademarks of Ansys, Inc. or its subsidiaries in the United States or other countries. All other brand, product, service and feature names or trademarks are the property of their respective owners.

© 2020 ANSYS, Inc. All Rights Reserved.